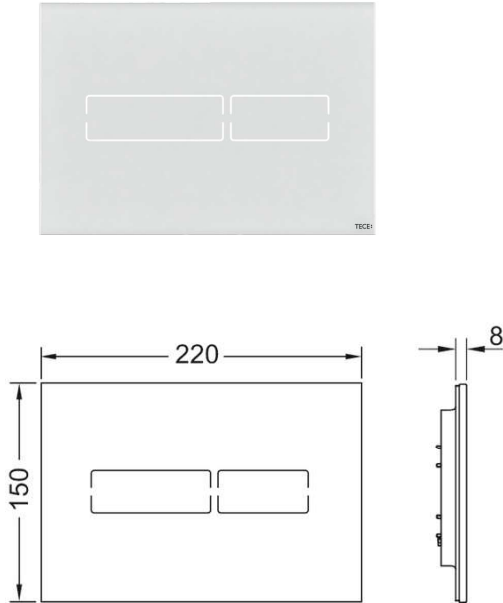


Lux Mini

TECE Lux Mini Acuator White KIT

Code:
9.240.960 KIT
Surface Mount or Flush Mount



- Cannot be used with 9.300.057 and 9.370.057 slimline cisterns
- Must use 9.300.055 for wall hung pan requiring 160mm wall cavity
- Must use 9.041.021 for back to wall pan requiring 130mm wall cavity
- Electronic flush plate with touch-free actuation for TECE standard cisterns with front actuation and actuation height of approx. 1m (centre flush plate).
- Flat glass actuation including mounting materials and actuation motor for dual-flush.
- The sensor detects when a person is approaching the toilet, and only illuminates the flush buttons then.
- The flush actuation is touch-free or by touching the button area.
- By programming with the TECELux Mini programming remote control (9.240.971), the electronics can be adjusted to individual requirements.
- **Remote options:**
 - Sensor recognition field
 - Hygiene flush
 - Actuation time
 - Safety flush
 - Display illumination brightness

Note:

Surface mount: minimum 10mm between cistern and external wall lining required depth (ie: AquaGib + tiles)

Flush mount: minimum 25mm between cistern and external wall lining before finished wall.

9.240.64x sits between external wall lining and finished wall lining (ie: 2 x 13mm AquaGib then recessed frame then tile)

(W x H x D)

220 x 150 x 8 mm



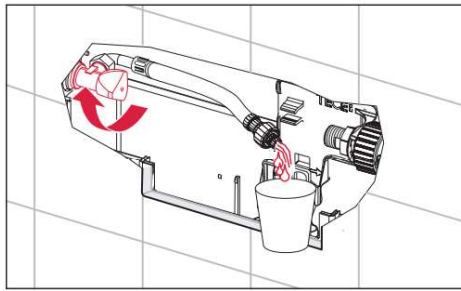
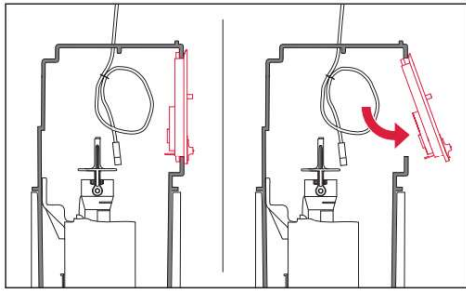
DESIGNED AND MANUFACTURED IN
GERMANY



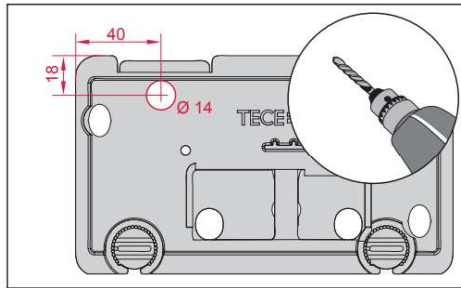
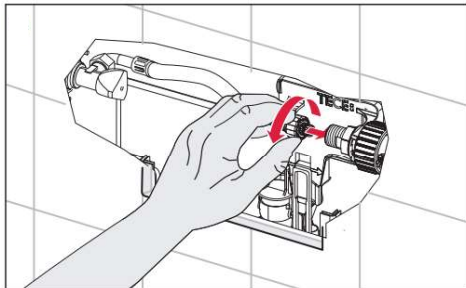
Lux Mini

TECE Lux Mini Acuator White KIT

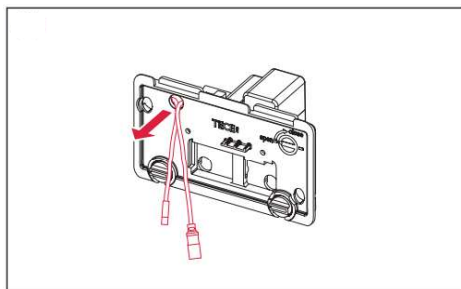
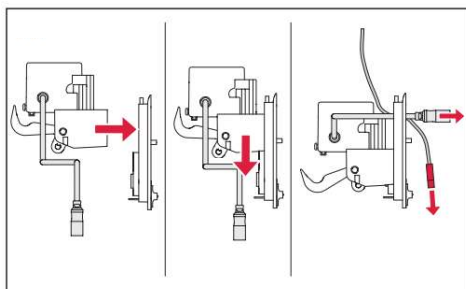
Code:
9.240.960 KIT
Surface / Flush Mount



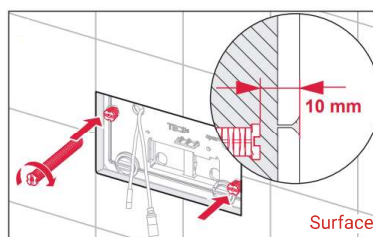
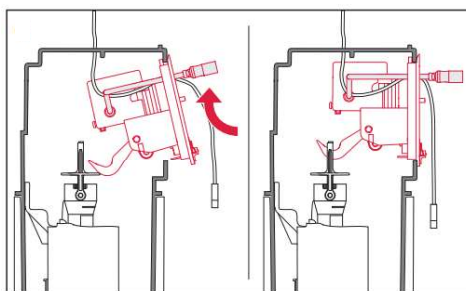
1. Feed the wiring through the top of the panel and test the water supply.



2. Connect the water supply and drill a 14mm hole in the top left of the plate as the dimensions show to the left

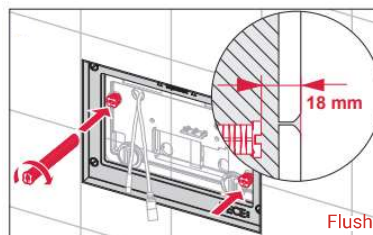


3. Run the hardwire and the wire connected to the flush mechanism through this 14mm hole.



4. Mount the flush mechanism to the cisten, hooking the flush valve.

Surface Mount: Wind the fixing bolts back to 10mm from the finished wall lining.

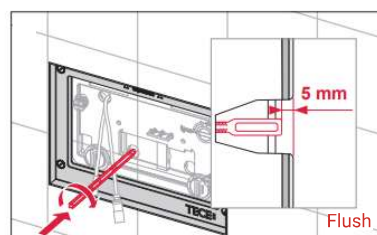
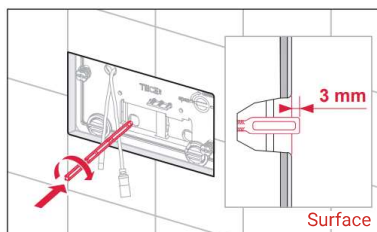
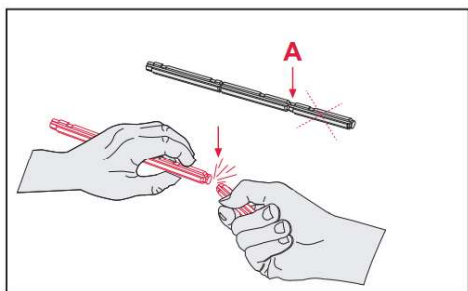


Flush Mount: Wind the fixing bolts back to 18mm from the finished wall lining.

Lux Mini

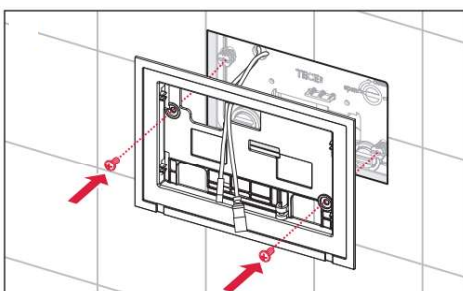
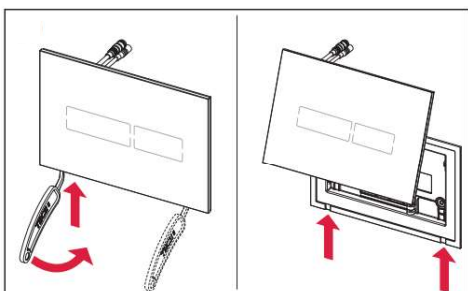
TECE Lux Mini Acuator White KIT

Code:
9.240.960 KIT
Surface / Flush Mount

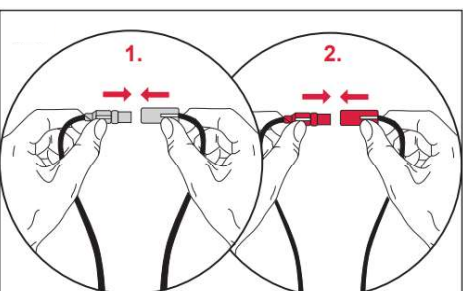
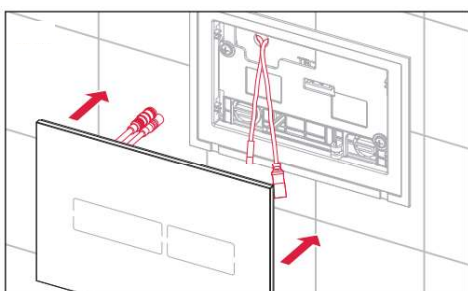


5. Snap rod at point A and wind rod in so that it extends XXmm from the external wall lining.

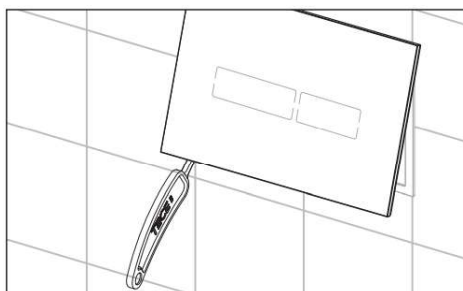
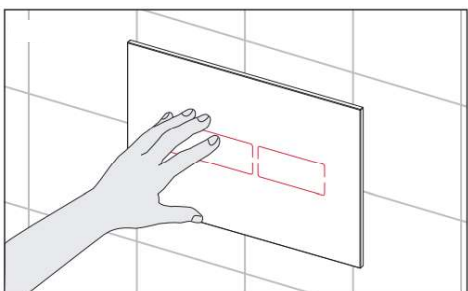
Surface Mount: 3mm
Flush Mount: 5mm



6. Use the tool supplied in the box to pry the glass panel from the fixing plate. Screw the fixing plate to the rods.



7. Connect the wiring (grey to grey, red to red) and push plate back and it will clip into position



8. For later on, keep the tool for servicing as shown.